

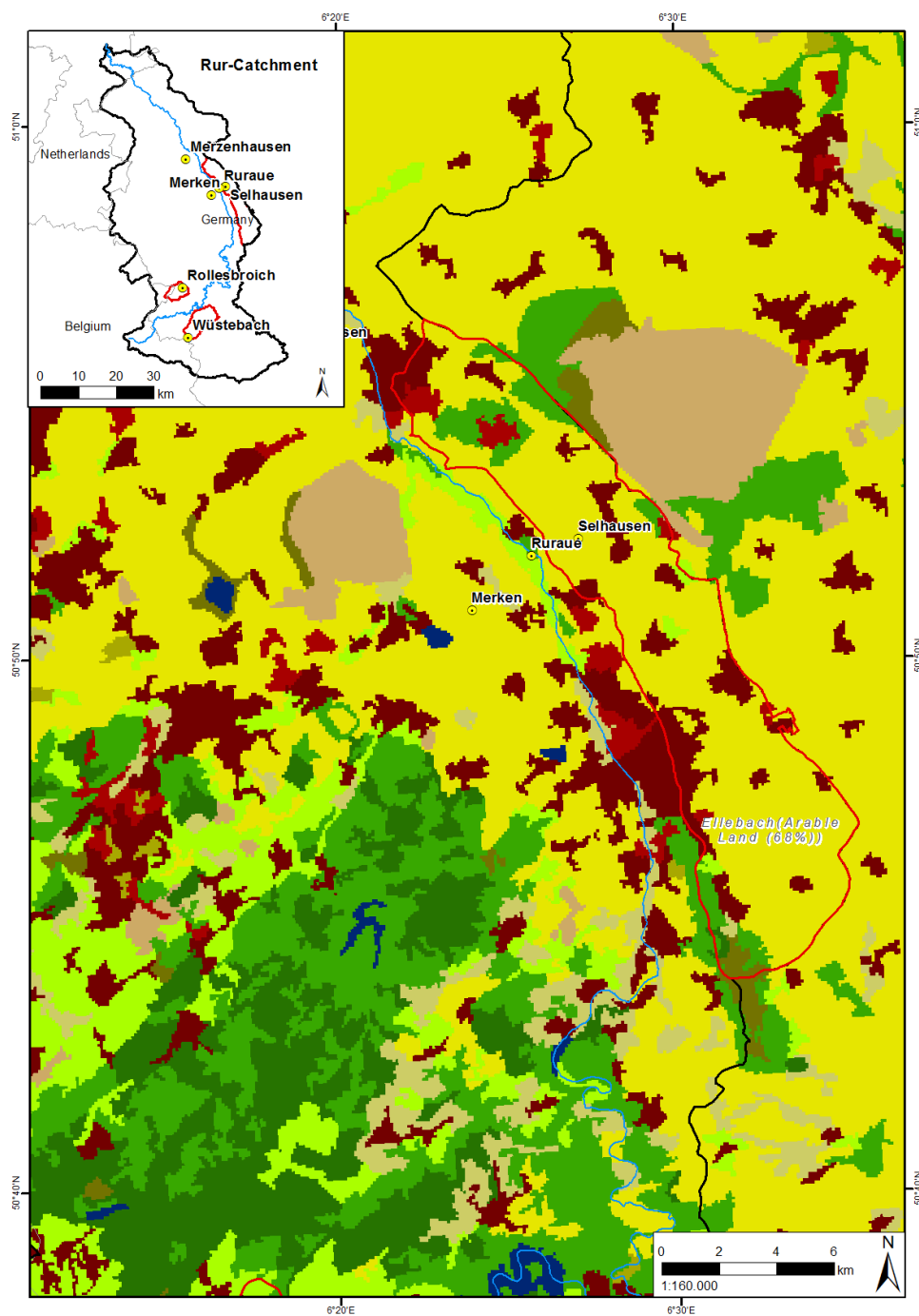
Documentation – CORINE Land Cover (CLC) 2006, Version 17 (13/03/2014)

	<p><u>Note:</u></p> <p>By downloading this dataset you accept adequate reference in case this data will be discussed or used in any publication or presentation.</p> <p>Unless otherwise indicated, re-use of content on the EEA website for commercial or non-commercial purposes is permitted free of charge, provided that the source is acknowledged. (http://www.eea.europa.eu/legal/copyright). Copyright holder: European Environment Agency (EEA).</p>
Content	
files:	<p>data</p> <p>CLC2006_100_V17_Rur.tif CLC2006_100_V17_Rur.tfw CLC2006_100_V17_Rur__ascii.txt [dataset as ascii file] CLC2006_100_V17_Rur__ascii.prj</p> <p>CLC2006_100_V17_RurDWD.tif CLC2006_100_V17_RurDWD.tfw CLC2006_100_V17_RurDWD__ascii.txt [dataset as ascii file] CLC2006_100_V17_RurDWD__ascii.prj</p> <p>CLC2006_250_V17_Rur.tif CLC2006_250_V17_Rur.tfw CLC2006_250_V17_Rur__ascii.txt [dataset as ascii file] CLC2006_250_V17_Rur__ascii.prj</p> <p>CLC2006_250_V17_RurDWD.tif CLC2006_250_V17_RurDWD.tfw CLC2006_250_V17_RurDWD__ascii.txt [dataset as ascii file] CLC2006_250_V17_RurDWD__ascii.prj</p> <p>CLC2006_V17_Rur.shp CLC2006_V17_Rur.shx CLC2006_V17_Rur.prj CLC2006_V17_Rur.dbf CLC2006_V17_Rur.shp (XML)</p> <p>CLC2006_V17_RurDWD.shp CLC2006_V17_RurDWD.shx CLC2006_V17_RurDWD.prj CLC2006_V17_RurDWD.dbf CLC2006_V17_RurDWD.shp (XML)</p>

	documentation this file Read_Me.txt Legend_CLC2006_V17.txt
extend:	Rur Catchment and DWD-Radar coverage area
provider:	Z1 (G. Waldhoff)
language:	english
date of publication:	02/2010 Upload of latest version (V17): 13/03/2014
data source:	CLC2006 V17 raster data: http://www.eea.europa.eu/data-and-maps/data/corine-land-cover-2006-raster-3 CLC2006 V17 seamless vector data: http://www.eea.europa.eu/data-and-maps/data/clc-2006-vector-data-version-3
date of purchase:	/
Description	
description:	<p>The pan-European project CORINE <i>Land Cover</i> (CLC) is part of the EU-program <i>Coordinate Information on the Environment</i> (CORINE) and provides consistent and comparable data on land cover and land use on a scale of 1:100.000 based on remote sensing data. During the implementation period 1985-1990 an information system on the state of the European environment was established, nomenclatures and methodologies were developed and agreed at European level. 1990 is the reference-year for the first data acquisition (CLC1990). The CLC data inventory was first updated to the reference-year 2000 (CLC2000). A second update was finalised in 2010 to the reference-year 2006 (CLC2006) with 39 participating countries. Both updates also provide layers of change-analysis.</p> <p>The CLC inventories are key reference data sets which provide the basis for a wide variety of environmental analysis and integrated environmental assessment at European and national levels.</p> <p>The CLC data-products are provided by the European Environment Agency (EEA) in raster (100x100m, 250x250m) and seamless vector format (reference-system ETRS89 / ETRS-LAEA).</p> <p>The CLC2006 vector data were merged to one dataset and clipped to the study-area's extent, both Rur-Catchment and extent of the DWD-Radar coverage area (ESRI-Shapefile).</p> <p>The CLC2006 raster data, both 250m and 100m spatial resolution, were clipped to the abovementioned extents and projected to WGS84 (GeoTIFF).</p>

	<p>For more information on the latest version please refer to the report by Büttner, Kosztra, Maucha & Pataki 2012: <i>Implementation and achievements of CLC2006</i></p> <p>http://www.eea.europa.eu/data-and-maps/data/corine-land-cover-2006-raster-2#tab-documents</p>
<p>abbreviations used in data:</p>	<p>/</p>

Example



Example of CLC2006 raster data, 100x100m.

Author

G. Waldhoff (Z1), U. Lussem