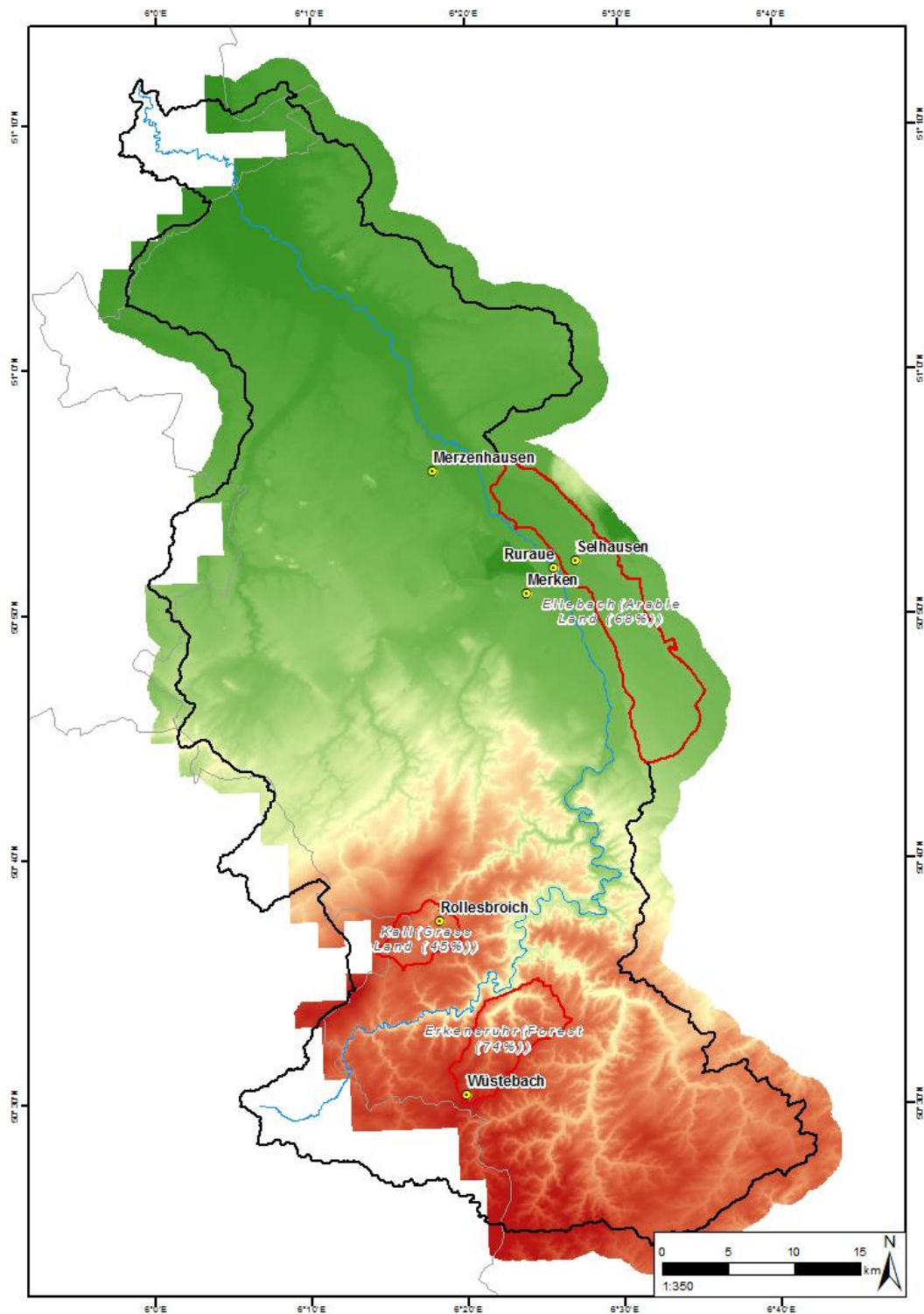


Documentation – Digital Elevation Model (DGM1) of the Rur Catchment, based on data from Bezirksregierung Köln

	<p><u>Note:</u></p> <p>This dataset is licensed under Data licence Germany – attribution – version 2.0 (https://www.govdata.de/dl-de/by-2-0)</p> <p>By downloading this dataset you accept adequate reference in case this data will be discussed or used in any publication or presentation.</p> <p>Copyright holder: Bezirksregierung Köln, Geobasis NRW</p>
Content	
files:	<p>data</p> <p style="padding-left: 40px;">dgm1_TR32.tif</p> <p>documentation</p> <p style="padding-left: 40px;">Produktstandard_gebaeudemodelle.pdf</p> <p style="padding-left: 40px;">Data licence Germany_V2_0.pdf</p> <p style="padding-left: 40px;">Nutzerinformationen.pdf</p> <p style="padding-left: 40px;">This file</p>
extend:	German parts of the Rur Catchment
provider:	Bezirksregierung Köln, Geobasis NRW
language:	German
date of publication:	<p>20.09.2017</p> <p>Dataset download: 24.05.2017</p>
data source:	https://www.opengeodata.nrw.de/produkte/geobasis/dgm/dgm1/0c6796e5-9eca-4ae6-8b32-1fcc5ae5c481
Description	
description:	<p>Digital terrain models (DTM) describe the natural terrain form of the earth's surface by georeferenced heights. Objects such as Vegetation and buildings are not included. The Bezirksregierung Köln, Geobasis NRW, provides within the framework of its legal mandate the DGM1 with a spatial resolution of one meter. Since 2013 the land area has been recorded with a point density of at least four points per square meter. Comprehensive completion with this measuring point density is planned for 2018.</p> <p>Spatial Reference: Datum: WGS84; Projection: UTM Zone 32N</p>

	Bezirksregierung Köln, Geobasis NRW: http://www.bezreg-koeln.nrw.de/brk_internet/geobasis/hoehenmodelle/gelaendemodelle/index.html , 19-04-2017.
More information:	http://www.bezreg-koeln.nrw.de/brk_internet/geobasis/index.html
abbreviations used in data:	/

Example



Coverage of the DGM1 displayed in ArcGIS