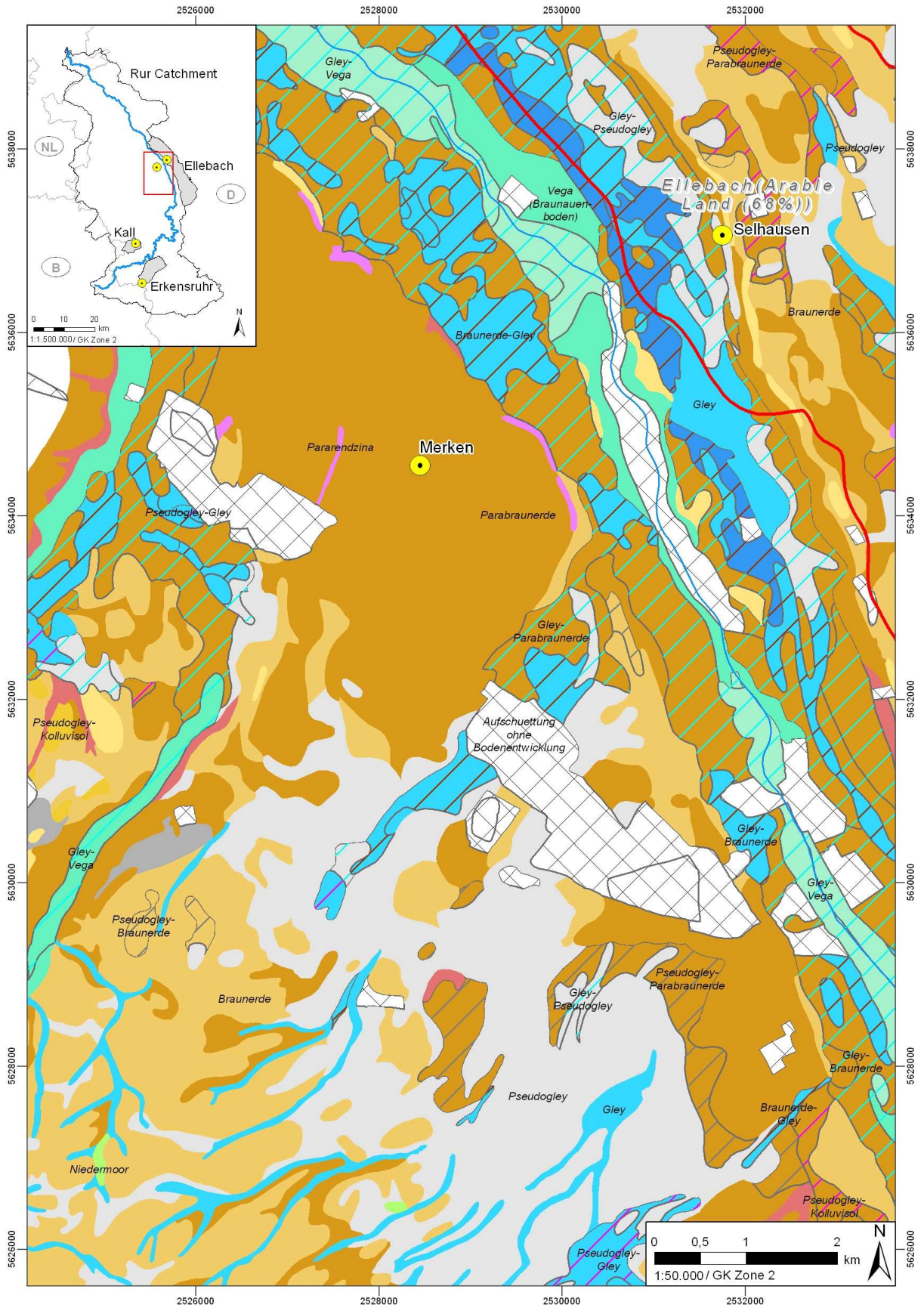


Documentation – Informationssystem Bodenkarte – IS BK 50 (Information System Soil Map) 1:50.000 NRW

Content	
files:	<p>data</p> <p>folder shape: BK 50 as shape files</p> <p>alle_col_20060424.dbf and BK50_one.dbf: database tables</p> <p>BK50_TR32_gesamt.mxd: BK 50 and SWB 50 as ArcGIS map file</p> <p>BK50_TR32_screenshot.mxd: BK 50 as ArcGIS map file (example map layout)</p> <p>BK50_TR32_gesamt and SWB50_TR32_gesamt: layer files BK 50 and SWB 50</p> <p>shape.rar: compressed version of shape files</p> <p>boden.style and swb_b.style: ArcGIS style files</p> <p>documentation</p> <p>this file</p> <p>abbreviation_IS_BK50.xls</p> <p>BK50_TR32_screenshot.jpeg</p> <p>research</p> <p>BK50_Liesmich: general Informations about the Soil Map</p> <p>BK50data_liesmich: Informations about the data for the Information System</p> <p>Swb_liesmich: Informations about soils worthy of protection</p> <p>Geologischer Dienst NRW.html: link to Geologischer Dienst</p>
data size:	<p>data folder: 385 MB</p> <p>entire folder: 394 MB</p>
extend:	<p>The area of this digital soil map is in accordance with the following map sheets of the printed map (south west of NRW):</p> <p>L 4302, L 4304, L 4306, L 4308, L 4310, L 4312, L 4502, L 4504, L 4506, L 4508, L 4510, L 4512, L 4702, L 4704, L 4706, L 4708, L 4710, L 4712, L 4902, L 4904, L 4906, L 4908, L 4910, L 4912, L 5000</p>

	L 5102, L 5104, L 5106, L 5108, L 5110, L 5112, L 5302, L 5304, L 5306, L 5308, L 5310, L 5502, L 5504, L 5506, L5508, L 5504, L 5506
provider:	Geologischer Dienst NRW
language:	German
date of publication:	2007-03
date of purchase:	2007-08-16
Description	
description:	<p>The Information System Soil Map NRW provides the contents of the printed soil map in a digital and updated form. The map is available for whole Nordrhein-Westfalen except some small areas near the frontier with the federal state Niedersachsen.</p> <p>The pedological database includes tables for analyses based on soil profil and horizon informations, thus a digital analysis of geometric and technial data is possible. Also a layer file with informations about soils worthy of protection is included.</p> <p>The informations about boundary lines and shapes of polygones are available as vector data files for ArcView, PIA-ASCII and others.</p> <p>By default the data is delivered without topography, but the topographic raster data from the Bezirksregierung Köln/Abt. 7 Geobasis NRW (www.lverma.nrw.de) is recommended.</p>
more information:	BK50_Liesmich, BK50data_liesmich, Swb_liesmich, http://www.gd.nrw.de/g_bk50d.htm
abbreviations used in data:	abbreviation_IS_BK50.xls

Example



Part of the IS BK 50 NRW displayed in ArcGIS

Author

Nora Tilly

tillyn@uni-koeln.de

Geographisches Institut der Universität zu Köln

Albertus-Magnus-Platz

50923 Köln